

Mouse Claudin 6 Protein-VLP

Cat. No. CLD-MM006

Description

| | |
|-------------------------|---|
| Source | Recombinant Mouse Claudin 6 Protein-VLP is expressed from HEK293. It contains Met1-Val219. |
| Accession | Q9Z262 |
| Molecular Weight | The target protein has a predicted MW of 24.60 kDa. |
| Endotoxin | Less than 1EU per μg by the LAL method. |
| Purity | > 95% as determined by HPLC |

Formulation and Storage

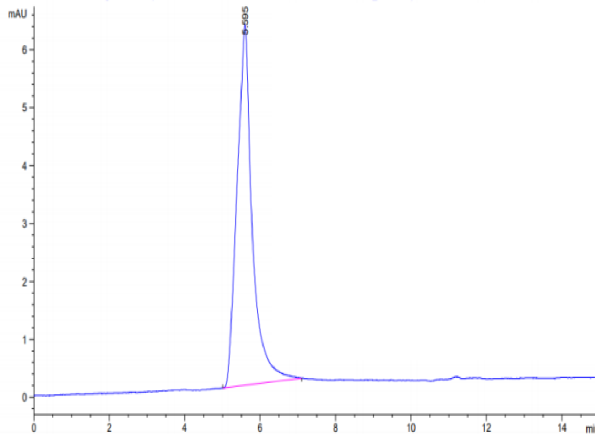
| | |
|--------------------|--|
| Formulation | Supplied as 0.22 μm filtered solution in PBS, 300mM L-Arginine (pH 7.4). Notice: If you need it for immunization, Do Not use any adjuvant. |
| Storage | Valid for 12 months from date of receipt when stored at -80°C. Recommend to aliquot the protein into smaller quantities for optimal storage. Please minimize freeze-thaw cycles. |

Background

Claudin-6 is a multipass transmembrane protein in the Claudin family. Claudin-6 is expressed by epithelial cells where it participates in tissue development and the maintenance of tight junction integrity. Human Claudin-6 shares 88% and 86% amino acid sequence identity with mouse and rat Claudin-6, respectively.

Assay Data

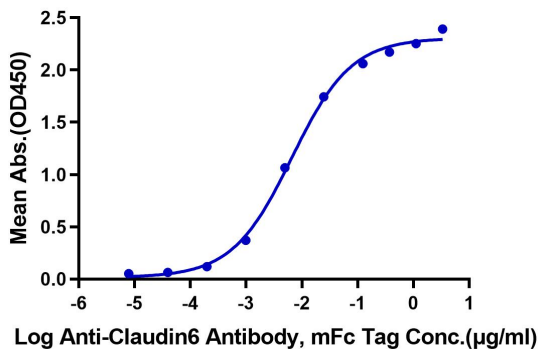
SEC-HPLC



The purity of Mouse Claudin 6 VLP is greater than 95% as determined by SEC-HPLC.

ELISA Data

Mouse Claudin 6 VLP ELISA
0.5 μg Mouse Claudin 6 VLP Per Well



Immobilized Mouse Claudin 6 VLP at 5 $\mu\text{g}/\text{ml}$ (100 $\mu\text{l}/\text{Well}$) on the plate. Dose response curve for Anti-Claudin6 Antibody, mFc Tag with the EC50 of 6.6ng/ml determined by ELISA.